



ALEXANDER 3

V.S. TRACTOR TUG "ALEXANDER 3" 3"BHP. 4.800 /BP 52/FiFi ½

PRINCIPAL PARTICULARS

Built	1991 / NEVE JADEWERET-GERMANY
Port of Registry	Piraeus - Greece
Flag	Greek
Call Sign	SW 6137
Class Society	LRS + 100 A1
IMO No.	8903181
MMSI No.	240733000

PERFORMANCE DATA

Max Speed	13 knots
Bollard Pull	52 MT
Consumption	Eco Speed: 8.5Tons/Day on 9 Knots Max Speed 11Tons/Day on 13 Knots

MAIN MACHINERY & PROPULSION UNIT

Main Engines	2x Man 8L/25-30
Propulsion	2x Voith Schneider Propellers G-32
Horsepower	(2x2400 HP @ 1000Rpm) 4800 BHP
Reduction Gear	Reduction Gear in Voith System
Generators	2xMan D 2866E 278KW

NAVIGATION & COMMUNICATION EQUIPMENT

A3+Fleet Broadband
 2x Radars X-Band / S-Band
 Echo Sounder – Speed Log – Anemometer – GPS– Auto Pilot
 Magnetic Compass - Gyro Compass - AIS – MF/HF SSB – Inmarsat-C
 VHF – NAVTEX – SHART – EPIRB – 3xPortable VHF - GMDSS

ADDITIONAL AUXILIARY SYSTEMS

Bildge Water Separator

DIMENSIONS

Length Overall	35.47m
Beam, MLD	11m
Max Operating Draft	5.84m
Depth	6.5m
GT	545
NT	163
Accommodation	2x1 + 1x4 +2x2 = 10 berths

DECK EQUIPMENT

Towing Winch	Single Hydraulic Drum HATLAPA 150 T
Towing Steel Wire	D44mm x 600m
Breaking Load	180mt
Deck Crane	1.7M / 3.4TONS
Anchors / Chain	2x427Kg , Chain 165m T = 20.5mm

CARGO & TANK CAPACITIES

Fuel Oil	134m3
Fresh Water	80m3
Foam	20m3
Lub Oil	31.6m3

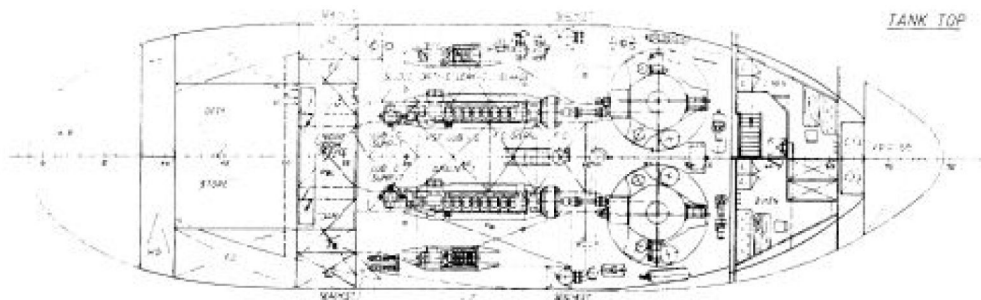
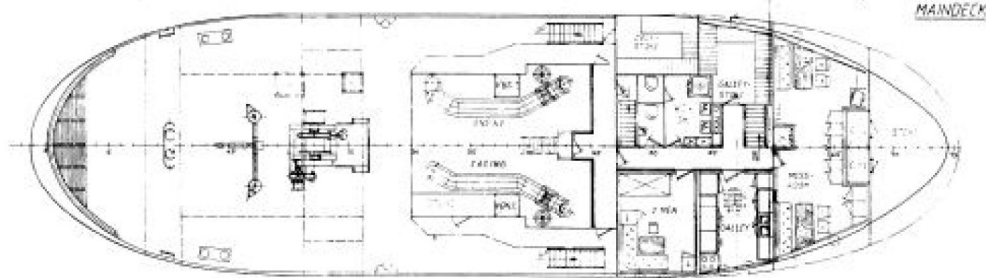
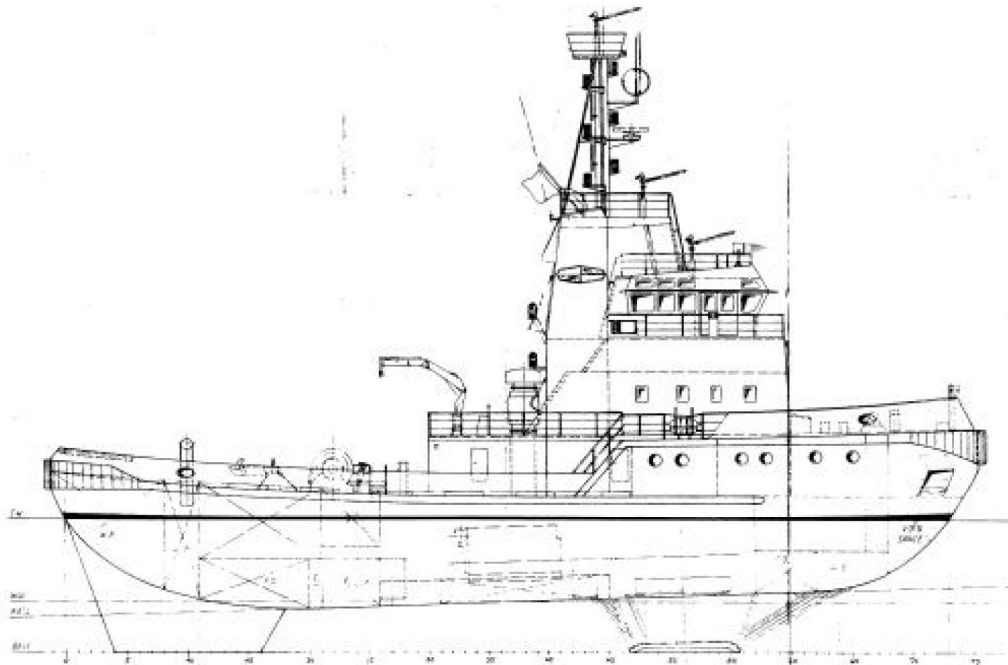
FIRE FIGHTING

FiFi Pump	2x 625 m3 /hr
FiFi Monitors	4 Water / Foam Remote
Water Spray / Foam	

LIFE SAVING EQUIPMENT (In compliance with SOLAS)

6 Persons Lifeboat – 8 Life Buoys – 30 life Jackets – 3x15 Persons Liferafts

SIDE VIEW TOP VIEW WHEELHOUSE



The information contained in this data sheet is for guidance purposes only and may be subject to changes. © Vernicos Tugs & Salvage